

**The Secretary-General**

Dr. Ron Palmer

AU-4514 Woodford QLD • 1025 Cove Road • Commissioner's Flat • AUSTRALIA

Phone: +61 7 5494 9873 • Fax: +61 7 5494 9573 • email: billabongdowns@bigpond.com

## FIMM NEWS

**Volume 14**

**June 2005**

**No. 2**

English Edition

### Content

<i>FIMM</i> International Academy of Manual/Musculoskeletal Medicine: Future Scientific Policy and Academy Format, Dr. Jacob Patijn, PhD.....	3
Académie Internationale pour la Médecine Manuelle/Musculo-articulaire de la FIMM: DEMANDE D'AHÉSION .....	12
FIMM Internationale Akademie für Manuelle Medizin: ANTRAG AUF MITGLIEDSCHAFT.....	13
FIMM Academia Internacional de Medicina Manual/Músculo-Esquelética: SOLICITUD DE ADMISIÓN .....	14
Международная академия мануальной Медицины <i>МФМСМ</i> : ЗАЯВЛЕНИЯ О ПРИЕМЕ УЧЛЕНЫ .....	15
Invitation to FIMM General Assembly 2005, London Gatwick.....	16
Programme .....	18
Agenda, <i>L'ordre du jour</i> , Tagesordnung .....	19
Registration .....	22

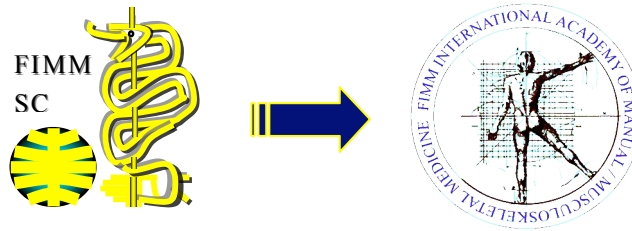
[www.fimm-online.com](http://www.fimm-online.com)



FIMM® 2005 – printed in Switzerland

## ***FIMM International Academy of Manual/Musculoskeletal Medicine: Future Scientific Policy and Academy Format***

Dr. Jacob Patijn, PhD, Scientific Director of the  
*FIMM International Academy of Manual/Musculoskeletal Medicine*



### **Transition from a FIMM Scientific Committee to a *FIMM International Academy of Manual/Musculoskeletal Medicine***

#### ***The Start***

During its first Annual General Meeting in Prague on the 16<sup>th</sup> of June 2005, the first Scientific Director of the *FIMM International Academy of Manual/Musculoskeletal Medicine* (M/M Medicine) unfolded before an audience of 40 new academy members both his scientific policy for the future and the new working format of the Academy.

In the past seven years the Scientific Committee (SC) of FIMM has created the foundations for the present Academy. Many activities of the previous FIMM SC made possible a smooth transition from a small Scientific Committee to an Academy. The previously defined conditions for science within the FIMM still count for the newly founded Academy. The appointment by FIMM of the Chairman, Administrative and Financial officers of the Executive Board of the Academy guarantees that FIMM plays and will continue to play an

important role with respect to science in M/M Medicine. The same is true for the condition that within FIMM science must be outside National Society interests. In the present Academy, membership is based solely on personal expertise in a particular scientific topic of M/M Medicine or related disciplines. Representation of a National Society or country does not play any role in Academy membership.

#### ***The problem***

The FIMM SC defined the most prominent problem in M/M Medicine, which formed the basis of its activities in the past seven years. The committee concluded that in M/M Medicine there was no coherence because there were too many different schools in different countries with too many different diagnostic procedures and too many different therapeutic approaches. To solve this problem the FIMM Scientific Committee developed solutions with respect to the content, form and tools. Priorities of scientific work in M/M Medicine were established, international networks were developed and plans for a scientific conference were made. The FIMM SC

emphasised that the first priority was to make diagnostic procedures in M/M Medicine reproducible. These provided the National Societies with a protocol to perform these kinds of studies and organised an International Instructional Course for reproducibility studies to teach members of educational boards of National Societies. Extensive literature studies of reliability and efficacy in M/M Medicine were undertaken by the FIMM SC, which led to many publications. A start was made to provide the international community of M/M Medicine with state of the art reports of efficacy and reliability in M/M Medicine, which can be incorporated into its educational systems.

To create a platform for mutual discussion between scientists a Scientific Committee Conference was organised at which (preliminary) research results were presented. This conference made it possible to exchange ideas on the basis of solid scientific method and according to the representation of a certain school in M/M Medicine. Outside efficacy and reliability, the FIMM SC thought it necessary to create a common theoretical background for M/M Medicine, by developing a consensus model for basic science in M/M Medicine, which can be used as a format to integrate the different schools of thought.

### ***The most important achievements***

In summary, it can be concluded that the most important achievements of the FIMM SC in the past seven years are first of all defining the central problem within M/M Medicine and its solutions. The work of the FIMM SC resulted in the firm position of science within FIMM. And most importantly, it has influenced a change in attitude of the international community of the FIMM towards a more evidence based M/M Medicine.

However, gradually it became obvious for the FIMM SC that the small composition of twelve members could not any longer guarantee further development towards a more evidence based M/M Medicine. Besides, the diversity of approaches, which exists in M/M Medicine, was not reflected in the FIMM Scientific Committee and results of scientific work undertaken in countries with a different approach could not be discussed and integrated internationally. Another observation was that the format of the small FIMM Scientific Committee could not guarantee the multidisciplinary and the eclectic character of M/M Medicine. And last but not least, other scientists and educationalists from the National Societies of FIMM could not be involved in the work of the FIMM SC. The FIMM SC developed plans for a large scientific organisation, which finally resulted in the foundation of the *FIMM* International Academy of M/M Medicine at the General Assembly in Bratislava 2004.

### ***Professionalism of M/M Medicine increased***

The new Academy will make it possible to involve more scientists and educationalists from the National Societies and therefore can better guarantee increased professionalism of M/M Medicine in a more evidence based way. It will provide the international community of FIMM with a much larger platform on which to interact and discuss the different approaches within M/M Medicine.

## **FIMM International Academy of Manual/Musculoskeletal Medicine: What will change?**

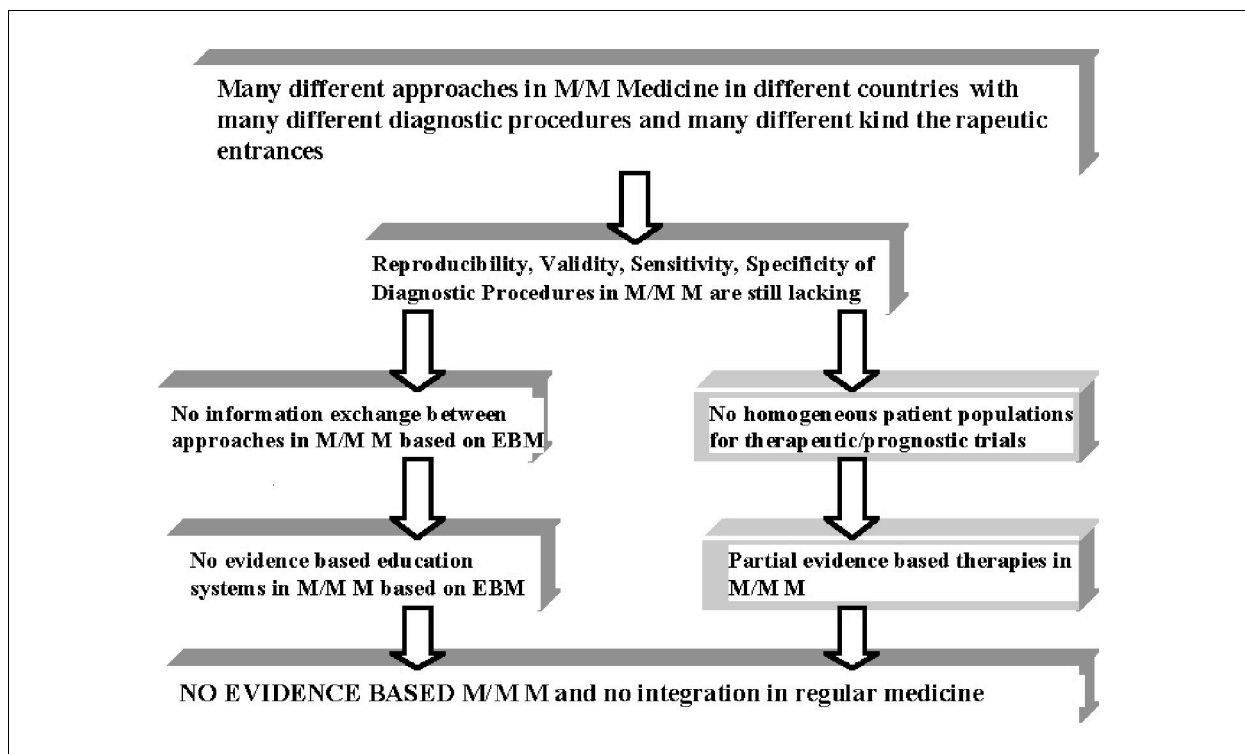
### ***Changing the Content?***

The content of the new Academy will not change. The problem defined by the previous FIMM SC will remain the starting point of the new Academy for its future activities (see scheme).

Reproducibility and validity of diagnostic procedures in M/M Medicine is two of the core businesses of the Academy. It provides the neutral tools based on Evidence Based Medicine for mutual discussion and information exchange between National Societies of FIMM. The Academy will constantly provide the education boards of the National Societies of FIMM with information about evidence based and reliable diagnostic procedures to integrate into their education systems. Therefore, the participation of educationalists in the Academy is vital. Education is nothing

without science and vice versa. They are mutually dependent. The new Academy will have a separate niche for educational science in M/M Medicine in which educationalists have a well-defined position within the Academy.

Evidence based and reliable diagnostic procedures are essential in the framework of efficacy in M/M Medicine. The unsatisfactory level of evidence of efficacy in M/M Medicine is mainly due to the inclusion of heterogeneous study populations in efficacy trials (RCTs). Efficacy in M/M Medicine will remain another core business of the Academy. The Academy will constantly provide the education boards of the National Societies of FIMM with updated information about efficacy of therapeutic approaches to integrate into their education systems. The Academy will continue to elaborate a common theoretical foundation for M/M Medicine within the developed consensus model.



Outside efficacy, reliability and basic research, the Academy will extend its scientific areas of attention to general topics such as «Complications in M/M Medicine», «Paediatric M/M Medicine» and special topics such as «Rheumatoid Arthritis and M/M Medicine» and «Whiplash Associated Disorders and M/M Medicine».

### *International Instructional Course*

To stimulate scientific work in M/M Medicine, the Academy will organise international instructional courses on reliability and efficacy. For the results of this scientific work, the Academy will organise Academy Conferences along the lines of the Conference arranged by the previous FIMM Scientific Committee.

### *International Journal*

For dissemination of scientific work, the Academy will develop plans to establish an international rated journal for M/M Medicine in cooperation with existing journals in this field. Details of the above-mentioned plans are elaborated below.

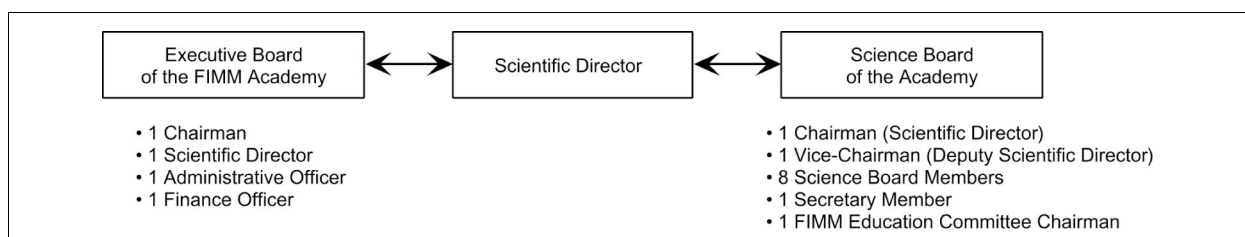
### ***Changing the Organisational Format?***

To some degree the previous format used in the FIMM SC will not change in the new Academy.

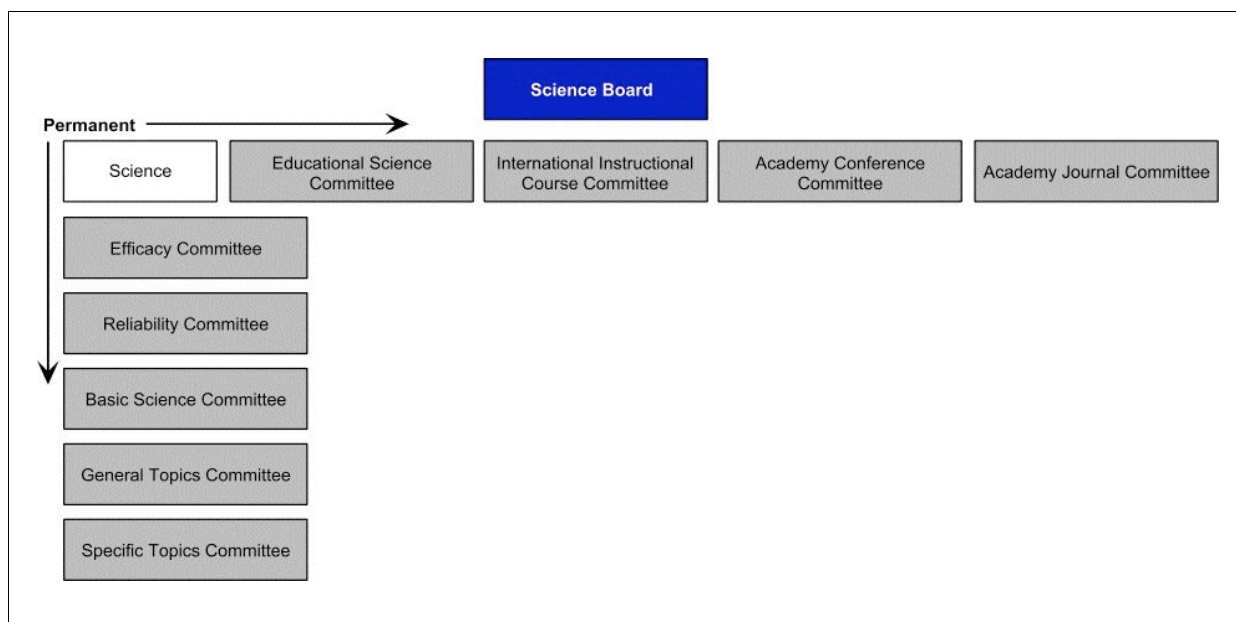
As stated above, the conditions for the work of the past FIMM SC are the same for the new Academy. Membership of the Academy is based solely on *personal expertise* in particular in scientific topics of M/M Medicine or related disciplines and educational expertise. Representations of National Societies or countries do not play any role in Academy membership.

Through its organisational structure, the Academy guarantees that FIMM will continue to play an important role with respect to science in M/M Medicine on an international base. Since the new Academy will involve more scientists and educationalists in its work, the organisational format will be fundamentally different from the previous FIMM SC. As illustrated in the scheme below, two different structures in the format of the Academy can be distinguished: an Executive Board and a Science Board. The Scientific Director of the Academy is both the Chairman of the Science Board and a member of the Executive Board. By invitation, the Deputy Scientific Director is invited to the Executive Board meetings.

The responsibilities of the Science Board are primarily the scientific content of the Academy, the educational aspects included. Therefore, the Chairman of the Education Committee of FIMM is a member of the Science Board. The Science Board is composed of an additional 9 members (including a deputy director) and a secretary member. All Science Board members and the Scientific Director are elected by the General Assembly of the Academy. The main responsibilities of the Executive Board are all the logistics around membership, finances and public relations of the Academy. It enforces the statutes (Articles of Association) of the Academy and is responsible (the Academy Chairman being nominated by the FIMM General Assembly, Administrative and Finance Officers by the FIMM Executive Board) for the contact with FIMM and the organisation of the annual Academy General Meetings.







### ***Changing the Scientific Format?***

In the previous FIMM SC, the Chairman played a vital and, even more important, the central role with respect to the scientific policy. Although decisions were made in a democratic way, the Scientific Committee members had a dependent position insofar as the scientific policy developed by the Chairman was decisive regarding the activities of the single members of the committee. In the Academy, by involving more persons from outside, a new scientific format was necessary in which the Science Board members must have a more independent position. As a consequence permanent committees will be formed in the Academy chaired by two Science Board members. An exception is the Educational Science Permanent Committee, which will be chaired by the FIMM Education Committee Chairman (presently Dr. Glen Gorm Rasmussen). In the scheme below the permanent Committees are shown.

In the Academy nine permanent committees will be functioning: five under the heading of «Science» and four committees with science related topics. All present and future Academy members will participate in permanent committees. As explained

later, temporary committees will fall under the heading «Specific Topic Committee». The details of all committees are explained below, in particular the relation between the FIMM Education Committee (might be called Board) and the Educational Science Committee of the Academy.

### ***Academy Membership Conditions***

Since the Academy core business is science, Academy members have to satisfy entrance conditions. Two persons (proposer and seconder) have to support an application for membership. Academy members have to be MD, American DO or University based medically related disciplines. Their CV, including publications, congress contributions and if applicable the data of a thesis must reflect their actual scientific expertise in M/M Medicine and/or related medical disciplines.

Also, educational membership will form an indispensable part of the Academy. Two persons (proposer and seconder) have to support an application for Academy membership. The entrance conditions for educationalists in the Academy must be reflected in their CV and will be defined as:

- a. Experience in postgraduate teaching in M/M Medicine
- b. Member of a National Society related to FIMM
- c. Course Leader or equivalent of National Society Courses
- d. Endorsement of conditions under a, b and c by his National Society

### ***Academy Committees Working Format***

The Chairmen (Science Board Members) of every Permanent Academy Committee have both to develop their own (scientific) committee policy and pursue the previous science policy. The total Science Board will discuss proposals in the Science Board Meeting to establish if they meet the general defined policy. They are responsible for contact with their committee members, for presentations at Science Board meetings and Academy Conferences, for publications and for attracting new Academy members. Since the financial resources are limited at the moment, most of the work in the Academy committees is done by E-mail. As explained later, proposals will be developed to organise committee meetings back to back with the Academy General Meeting and/or Academy Conferences.

### ***Permanent Academy Educational Science Committee in relation to the FIMM Education Committee<sup>1</sup>***

The FIMM Education Committee (eventually to be called Board in the future) in its own right has to be maintained, because in this Board the National Societies of FIMM are represented. Since there is also an Educational Science Committee in the Academy, a clear distinction between both structures has to be defined. The FIMM Education Committee is vital for implementation of evidence based scientific materials produced by the Academy to the

educational systems of the National Societies. On the other hand the FIMM Education Committee is a source of information for the work of the Academy. Therefore, the responsibilities of the FIMM Education Committee can be defined as:

1. Providing the Academy with essential information about education in National Societies of FIMM
2. Implementation of the evidence based material of the Academy in National Societies' education systems
3. Developing a Core Curriculum of evidence based Education in M/M Medicine
4. Developing an evidence based Basic Course for International Teaching in M/M Medicine
5. Developing and updating a Glossary of Nomenclature in M/M Medicine
6. Developing and updating a Glossary of Diagnostic Procedures in M/M Medicine
7. Developing and updating a Glossary of Therapies in M/M Medicine

In contrast, the responsibilities of the Educational Science Committee of the Academy can be defined as:

1. Improvement of education systems in M/M Medicine
2. Training of University graded teachers in M/M Medicine
3. Development of a curriculum for University graded teachers in M/M Medicine
4. Academy certification of international teachers in M/M Medicine
5. Defining relation between M/M Medicine and additional therapy(ies)
6. Organising International Instructional Courses for Education Boards of the National Societies of FIMM

<sup>1</sup> Chairman: Dr. Glen Gorm Rasmussen



## **Permanent Academy Science Committees**

As shown above, five permanent committees fall under the heading of «Science»:

1. The Efficacy Committee
2. The Reliability Committee
3. The Basic Research Committee
4. The General Topic Committee
5. The Special Topic Committee.

### ***1. The permanent Academy Efficacy Committee***

Although this committee has to develop its own policy, the content of activities is still influenced by the work of the previous FIMM SC. It was agreed that the present Academy has first to complete this work. The FIMM SC started with the development of a consensus report about the efficacy of M/M Medicine in the lumbar region. The present permanent Academy Efficacy Committee will pursue this policy by developing consensus reports in the other regions of the locomotor system: cervical, thoracic, shoulder and extremities. Future activities of this committee will be updating, based on published literature of the efficacy in the different regions, and as a consequence updating consensus reports about efficacy. Developing an International Instructional Course for Pragmatic Trials. Establishment of an inventory: the FIMM Education Committee will be provided with data about therapeutic approaches in M/M Medicine. The committee has to transfer this information to the FIMM Education Committee for further implementation.

### ***2. The permanent Academy Reliability Committee***

Although this committee has to develop its own policy, the content of activities is still influenced by the work of the previous FIMM SC. It was agreed that the present Academy has first to complete this work. The FIMM SC started with the develop-

ment of an analysis about the level of published reproducibility studies in M/M Medicine in the lumbar region. The present permanent Academy Reliability Committee will pursue this policy by reporting on the analysis of reproducibility studies in M/M Medicine in different regions of the locomotor system: cervical, thoracic, shoulder and extremities.

Future activities of this committee will be updating, based on published literature of the reproducibility in the different regions of diagnostic procedures in M/M Medicine and as a consequence updating consensus reports about reproducibility. Updating and professionalizing the present International Instructional Course for Educational Boards for diagnostics in M/M Medicine. Establishment of an inventory and updating: The FIMM Education Committee, of diagnostic procedures in M/M Medicine and their validity, provides data. The committee has to transfer this information to the FIMM Education Committee for further implementation.

### ***3. The permanent Academy Basic Research Committee***

Although this committee has to develop its own policy, the content of activities is still influenced by the work of the previous FIMM SC. It was agreed that the present Academy has first to complete this work. The FIMM SC started with the development of a consensus model as a framework to discuss the basic research in M/M Medicine. The goal is to provide the National Societies of FIMM with a theoretical background of their profession. The Consensus Model forms the hat stand for the different topics in basic research for discussion within the committee. The Committee has to develop an inventory: the FIMM Education Committee provides data, represented by schools of thoughts in M/M Medicine. The committee has to transfer this information to the FIMM

Education Committee for further implementation.

#### ***4. The permanent Academy General Topics Committee***

Outside Reliability, Efficacy and Basic Research the Academy has also to form evidence based opinion about general topics such as: complications in M/M Medicine, Paediatric M/M Medicine, M/M Medicine in the Elderly, and Complementary Diagnostics in M/M Medicine etc.

The permanent Academy General Topics Committee will make an inventory of general topics and set the priorities for evaluation. The Committee has to develop an inventory: data is provided by the FIMM Education Committee, for instance concerning complementary diagnostics (such as MRI) used in M/M Medicine.

The Committee will be responsible for the establishment of temporary Academy committees, by attracting experts in a particular field dependent on the topic of the Committee. The committee has to update constantly the general topics, based on published literature searches. The committee has to transfer this information to the FIMM Education Committee of for further implementation.

#### ***5. The permanent Academy Special Topics Committee***

Besides reliability, efficacy and basic research the Academy has also to form an evidence based opinion about special topics such as: whiplash injuries and M/M Medicine, rheumatoid arthritis and M/M Medicine, general hypermobility and M/M Medicine, temporomandibular Dysfunction and M/M Medicine, cerebral palsy and M/M Medicine.

The permanent Academy Special Topics Committee will make an inventory of spe-

cial topics and set the priorities for evaluation. The Committee has to develop an inventory: the FIMM Education Committee provides data about special topics related to M/M Medicine.

This committee will be responsible for the establishment of temporary Academy committees, by attracting experts in a particular field dependent on the topic of the committee. The committee has constantly to update the special topics, based on published literature searches. The committee has to transfer this information to the FIMM Education Committee for further implementation.

#### ***Permanent Academy science related Committees***

As shown above, outside the permanent science committees, four other permanent committees are present in the Academy:

6. The Educational Science Committee
7. The International Instructional Course Committee
8. The Academy Conference Committee
9. The Academy Journal Committee

#### ***6. The permanent Academy Educational Science Committee***

This is discussed above in relation to the FIMM Education Committee.

#### ***7. The permanent Academy International Instructional Course Committee***

This committee has to develop a professionalized version of the present International Instructional Course on the reproducibility in M/M Medicine for educational boards. Based on the results of the Reliability Committee an international instructional course concerning validity will be developed. The same is true for an International Instructional Course for Pragmatic Trials. The Efficacy Committee will provide the ingredients. A policy has to be developed for implementing these

international courses in relation to FIMM congresses, Academy Annual General Meeting etc..

#### **8. The permanent Academy Conference Committee**

Based on the previous experience with the FIMM SC Conference the committee has to elaborate plans for an Academy Conference organised every other year. This Academy Conference will be a platform for scientific discussion about restricted topics of M/M Medicine or related disciplines, preliminary results of efficacy, reproducibility and sensitivity and specificity studies, proposals for study protocols, guidelines for educational systems of different schools in M/M Medicine, Science Board presentations, Academy Committee presentations, new educational formats for courses in M/M Medicine, new therapeutic algorithms in M/M Medicine and consensus reports of the Academy.

In the future, the Academy Conference will be organised together with the Academy Annual General Meeting, the Executive Board Meeting and the Science Board Meeting and perhaps committee meetings. This organisation will be in cooperation with a FIMM national society member. By organising the different Academy meetings at the same time and at the same place, optimal synergism is created, not only between Academy members but also between Academy members and the Academy Executive and Science Board members. In those years in which no Academy Conference is organised, an alternative program will be organised for the Academy members together with the Annual General Meeting, the Executive Board Meeting and the Science Board Meeting and perhaps committee meetings.

#### **9. The permanent Academy Journal Committee**

The Academy will form a committee to investigate the possibilities for establishing an International Journal of the Academy, which eventually has to evolve to an international rated journal for M/M Medicine. Present journals of M/M Medicine will be involved in this elaboration of the plans.

#### **Final remarks**

These considerations comprise an overview of the future work of the Academy. Activities have to develop gradually. Although appearing ambitious, these plans provide present and future Academy members and the National Societies with a framework on which the FIMM International Academy of M/M Medicine will and can function in the future. These plans can only succeed if high levels of expertise are present in the Academy with a mutual respect for each other's opinion, not only reflected by a willingness to exchange own points of view, but also a willingness to adapt and integrate different views in M/M Medicine. A basic critical and evidence based oriented attitude is vital to function within the Academy, with the ultimate goal to lift M/M Medicine to a higher level. As a consequence, being a member of the Academy demands a commitment: one has to be prepared to expend time, effort and energy in the Academy, and to stimulate colleagues to join. Considering the above outlined plans, the Academy wishes the help of all experts in the field of M/M Medicine and related disciplines.

Jacob Patijn, June 2005.



## **Académie Internationale pour la Médecine Manuelle/ Musculo-articulaire de la FIMM**

### **DEMANDE D'ADHÉSION**

L'Académie de la FIMM, créée en septembre 2004 lors de l'Assemblée Générale de la FIMM (La Fédération Internationale de la Médecine Manuelle / musculo-articulaire), remplace l'ancien Comité Scientifique de la FIMM dont la composition était limitée à douze membres. L'Académie inclura un nombre bien supérieur de scientifiques et d'éducateurs qui s'engageront au moyen de groupes de travail et de corps dédiés dans des débats consensuels sur des sujets tels que la recherche de base, l'efficacité, les procédures de diagnostic, les complications dans la médecine M/M et l'enseignement international. L'Académie sera pluridisciplinaire et fournira un forum lors des conférences de l'Académie pour la présentation de résultats préliminaires du travail scientifique en matière de médecine manuelle/musculo-articulaire et de propositions pour la mise en oeuvre de la science par l'enseignement. Les domaines relevant de la science et de l'éducation sont sous la responsabilité du Conseil Scientifique (présidé par le Directeur Scientifique, Dr. Jacob Patijn). Les futurs membres seront élus démocratiquement par les membres de l'Académie. Les statuts d'association de l'Académie sont disponibles sur le site web de la FIMM : [www.fimm-online.org](http://www.fimm-online.org). L'administration de l'Académie repose dans les mains du Conseil Exécutif (Président, Michael Hutson).

L'adhésion est ouverte à tout praticien médical individuel actif dans le domaine de la médecine manuelle / musculo-articulaire et aux diplômés universitaires dont le cabinet est associé à la médecine manuelle / musculo-articulaire. Toute demande est bienvenue et devra être soutenue par un parrain et un second et par un curriculum vitae qui démontre une expérience dans le domaine de la recherche scientifique et/ou de l'enseignement.

La souscription annuelle actuelle est de € 100. Les formulaires de demande peuvent être téléchargés depuis le site web de la FIMM, ou en alternative en contactant le responsable administratif de l'Académie, le Dr. Usamah Jannoun. Les formulaires de demande remplis accompagnés d'un CV doivent être renvoyés au Dr. Jannoun à l'adresse suivante:

1 New England Cottages, Handcross Road, Balcombe, West Sussex. RH17 6JU, Angleterre, Royaume-Uni ou par courriel à: [orthmed@doctors.org.uk](mailto:orthmed@doctors.org.uk)

**Dr. J. Patijn (Directeur scientifique) Dr. M. Hutson (Président du Conseil Exécutif),  
Dr. U. Jannoun (Responsable Administratif), Dr. V. Dvorak (Responsable financier).**





## **FIMM Internationale Akademie für Manuelle Medizin**

### **ANTRAG AUF MITGLIEDSCHAFT**

Die FIMM Akademie, die im September 2004 auf der Generalversammlung der FIMM (Internationale Gesellschaft für Manuelle Medizin) eingerichtet wurde, ersetzt das frühere Wissenschaftliche Komitee der FIMM. Während das Wissenschaftliche Komitee auf zwölf Mitglieder beschränkt war, wird die Akademie eine wesentlich größere Anzahl von Wissenschaftlern und Ausbildern umfassen. Diese werden sich in Projekt- und Arbeitsgruppen an der Konsensfindung für Themen wie Grundlagenforschung, Wirksamkeit, diagnostische Prozeduren und Komplikationen der Manuellen Medizin beteiligen und sich darüber hinaus für die internationale Lehre und Ausbildung engagieren. Die Akademie wird interdisziplinär arbeiten. Auf Akademie-Konferenzen bietet sie ein Forum für die Präsentation vorläufiger Forschungsergebnisse aus dem Bereich der Manuellen Medizin und für Vorschläge zur Umsetzung wissenschaftlicher Erkenntnisse in der Ausbildung. Die Belange von Wissenschaft und Ausbildung liegen in der Verantwortung des Wissenschaftlichen Beirates (unter Vorsitz des Wissenschaftlichen Direktors Jacob Patijn), dessen zukünftige Mitglieder von den Mitgliedern der Akademie demokratisch gewählt werden. Die Statuten der Akademie finden sich auf der FIMM-Website [www.fimm-online.org](http://www.fimm-online.org). Die Verwaltung der Akademie liegt in den Händen des Vorstandes (Vorsitzender: Michael Hutson).

Die Mitgliedschaft ist offen für Mediziner, die auf dem Gebiet der Manuellen Medizin praktizieren, und für Universitätsabsolventen, deren Arbeit mit der Manuellen Medizin im Zusammenhang steht. Anträge sind willkommen; sie sollten von einem vorschlagenden und einem befürwortenden Bürgen unterstützt werden, sowie auch durch einen Lebenslauf, aus dem Erfahrungen in Forschung und/oder Lehre hervorgehen.

Gegenwärtig beträgt der jährliche Mitgliedsbeitrag € 100. Antragsformulare können Sie von der FIMM-Website herunterladen. Alternativ erhalten Sie sie über den Generalsekretär der Akademie, Dr. Usamah Jannoun. Senden Sie den ausgefüllten Antrag zusammen mit ihrem Lebenslauf an Dr. Jannoun unter der postalischen Anschrift:

1 New England Cottages, Handcross Road, Balcombe, West Sussex, RH17 6JU, England, U.K. oder per eMail an: [orthmed@doctors.org.uk](mailto:orthmed@doctors.org.uk)!

**Dr. J. Patijn (Wissenschaftlicher Direktor); Dr. M. Hutson (Vorsitzender des Vorstandes),  
Dr. U. Jannoun (Generalsekretär), Dr. V. Dvorak (Schatzmeister).**



## **FIMM Academia Internacional de Medicina Manual/ Músculo-Esquelética**

### **SOLICITUD DE ADMISIÓN**

La Academia FIMM, fundada en septiembre de 2004 por la Asamblea General de FIMM (Federación Internacional de Medicina Manual/Músculo-Esquelética), sustituye el antiguo Comité Científico FIMM, que estuvo limitado a doce miembros. La Academia se conformará por un número mucho mayor de científicos y pedagogos que, a través de equipos de investigación y grupos de trabajo coincidirán en el debate consensuado sobre asuntos como la investigación básica, eficacia, procedimientos de diagnóstico, complicaciones en la Medicina M/M y enseñanza internacional. La Academia será multidisciplinar y constituirá un foro a través de la Conferencia de la Academia para la presentación de resultados preliminares de trabajos científicos sobre Medicina Manual/Músculo-Esquelética y las propuestas para la implementación de la ciencia a través de la enseñanza. Los asuntos científicos y pedagógicos serán responsabilidad de la Comisión Científica (presidida por el Director Científico Jacob Patijn), cuyos miembros futuros serán elegidos democráticamente por los miembros de la Academia. Los estatutos de la Academia están disponibles en el sitio Web de la FIMM, [www.fimm-online.org](http://www.fimm-online.org). La administración de la Academia está en manos de una Comisión Ejecutiva (Presidente, Michael Hutson).

Pueden ser miembros los practicantes médicos individuales en el campo de la Medicina Manual/Músculo-Esquelética y los graduados universitarios cuya actividad esté relacionada con la Medicina Manual/Músculo-Esquelética. Se admiten solicitudes que deberán ir apoyadas por un proponente y un secundante y por un curriculum vitae que avale la experiencia en investigación científica y/o la enseñanza.

La cuota anual de suscripción es de € 100. Los impresos de solicitud pueden descargarse del sitio Web de la FIMM o bien poniéndose en contacto con el encargado de administración de la Academia, Dr. Usamah Jannoun. Las solicitudes cumplimentadas serán enviadas al Dr. Jannoun, acompañadas por un CV:

1 New England Cottages, Handcross Road, Balcombe, West Sussex. RH17 6JU, England, UK o por correo electrónico a: [orthmed@doctors.org.uk](mailto:orthmed@doctors.org.uk)

**Dr. J. Patijn (Director Científico) Dr. M. Hutson (Presidente Comisión Ejecutiva).**

**Dr. U. Jannoun (Oficial Administrativo), Dr. V. Dvorak (Oficial Financiero).**





## Международная академия мануальной скелетно-мышечной медицины МФМСМ (FIMM)

### ЗАЯВЛЕНИЯ О ПРИЕМЕ В ЧЛЕНЫ

Академия МФМСМ, основанная в сентябре 2004 г. на Генеральной ассамблее МФМСМ (Международная федерация мануальной скелетно-мышечной медицины), заменяет существовавший ранее Научный комитет МФМСМ, ограничивавшийся двенадцатью членами. В состав Академии будет входить гораздо большее число ученых и педагогов-теоретиков, которые будут в составе специальных комиссий и рабочих групп заниматься обсуждением таких тем, как фундаментальные исследования, эффективность, диагностические процедуры, осложнения в мануальной скелетно-мышечной медицине и международное обучение. Академия будет заниматься большим количеством дисциплин и выступать в роли форума на конференциях Академии для представления предварительных результатов научной работы в области мануальной скелетно-мышечной медицины и предложений по внедрению научных результатов путем обучения.

Научные и образовательные вопросы входят в компетенцию Научного совета (под председательством Директора по науке Джейкоба Патижна (Jacob Patijn)), будущих членов которого будут выбирать демократично члены Академии. Устав Академии можно найти на веб-сайте МФМСМ: [www.fimm-online.org](http://www.fimm-online.org). Управление Академией осуществляет Исполнительный комитет (Председатель Майкл Хатсон (Michael Hutson)).

Членами Академии могут стать частные врачи, практикующие в области мануальной/ скелетно-мышечной медицины, и выпускники университетов, практика которых связана с мануальной/ скелетно-мышечной медициной.

Заявления на вступление в члены приветствуются, и должны поддерживаться лицом, предлагающим новую кандидатуру, и лицом, выступающим за принятие этой кандидатуры, а также резюме, демонстрирующим опыт в области научных исследований и/ или преподавательской деятельности.

На данный момент ежегодный членский взнос составляет 100 евро. Форму заявления можно загрузить с веб-сайта МФМСМ, либо обратившись к сотруднику администрации Академии д-ке Усаме Джаннуну (Dr. Usamah Jannoun). Заполненные формы с приложением резюме следует отослать д-ке Джаннуну по адресу:

Нью-Ингленд Коттаджес 1, Хэндкросс-роуд, Болкомб, Уэст-Сассекс, RH17 6JU Англия, Соединенное Королевство (1 New England Cottages, Handcross Road, Balcombe, West Sussex, RH17 6JU England, UK) или по электронной почте: [orthmed@doctors.org.uk](mailto:orthmed@doctors.org.uk).

**Д-ж.Дж. Патижн (Директор по науке), д-ж М. Хатсон (Председатель Исполнительного комитета, д-ж У. Джаннун (сотрудник администрации), д-ж В. Дворак (Dr. V. Dvorak) (фининспектор).**

## The General Assembly of FIMM 2005

### London Gatwick (United Kingdom)

By Invitation of the British Institute of Musculoskeletal Medicine BIMM



Dear Colleagues

The British Institute of Musculoskeletal Medicine (BIMM) welcomes you to the General Assembly of FIMM in the South of England, an area of outstanding natural beauty with undulating hills, grassy down lands and dense woodlands to explore.

Set in the countryside, Copthorne Hotel is located midway between the cosmopolitan city of London and the coastal town of Brighton. Both are easily accessible by train from London Gatwick Airport (LGW). You may seek tour assistance from the 24-hour hotel front desk.

**LGW:** Approximate driving time is 10 minutes to the hotel and distance is 5 miles (8 kilometres). There is a complimentary hotel shuttle bus, which operates from 5 AM to 10 PM, running approximately every 45 minutes. Taxis are available just outside the airport building (£10 to hotel).

The Hotel offers an indoor swimming pool with a poolside bar, three restaurants and a bar/lounge, a plethora of exercise options including tennis and squash courts, a running track/path onsite, aerobics, a fully equipped gym, and an 18-hole golf course nearby. Guests can unwind in the sauna, steam room, soak in a spa tub or receive a beauty treatment. Bicycles rentals are nearby.

The FIMM Executive Board meetings will be held on Wednesday 7<sup>th</sup> and Thursday 8<sup>th</sup>. On Friday the 9<sup>th</sup>, the General Assembly will take place. All meetings are at the Copthorne Hotel. On Saturday the 10<sup>th</sup>, the FIMM International Academy Executive Board meeting will be held in the nearby village of Balcombe.

On behalf of BIMM, I welcome you to the South of England and hope that your stay will be enjoyable and pleasant.

Dr. Usamah Jannoun  
BIMM Council Member  
FIMM Academy Executive Board Member  
[orthmed@doctors.org.uk](mailto:orthmed@doctors.org.uk)

## Location

### **Copthorne, London Gatwick (United Kingdom)**

Copthorne Hotel

Copthorne Way, London Gatwick, West Sussex, RH10 3PG

United Kingdom

Tel: +44 (0) 1342 34880

Fax: +44 (0) 1342 348833

E-mail: [sales.gatwick@mill-cop.com](mailto:sales.gatwick@mill-cop.com)

Reservations: +44 (0) 845 4560034 (Proposal ltd.)

As for a presentation of your society at this reunion, a delegate of your society is asked to have a short presentation about the activities of your society. Of course the new members will get a large opportunity to present themselves and as usual the host (United Kingdom, BIMM) will have a presentation. However, please make sure that your presentation does not take more than 4 minutes.

Please consider article 8 of the statutes.

For registration to the General Assembly please go to <http://www.fimm-online.org> or use the Registration form attached.

Please make your **HOTEL ROOM** reservations by going to <http://www.proposaltd.com> and then **bedrooms for events**.



Landscape near Copthorne Hotel



## Programme

### ***Le mardi 6 septembre 2005***

**Tuesday, September 6, 2005**

**Dienstag, den 25. September 2005**

*Arrivée des membres du Comité exécutif*

Arrival of Members of the Executive Committee

Ankunft der Mitglieder des Exekutivkomitees

### ***Le mercredi 7 septembre 2005***

**Wednesday, September 7, 2005**

**Mittwoch, den 7. September 2005**

09.00-18.00 *Réunion du Comité exécutif, 1<sup>er</sup> jour*  
Executive Committee meeting, 1<sup>st</sup> day  
Tagungen des Exekutivkomitees, Tag 1

20.00 *Dîner au Pup, Copthorne*  
Pub Dinner, Copthorne  
Nachtessen im Pub, Copthorne

### ***Le jeudi 8 septembre 2005***

**Thursday, September 8, 2005**

**Donnerstag, den 8. September 2005**

09.00-18.00 *Réunion du Comité exécutif, 2<sup>e</sup> jour*  
Executive Committee meeting, 2<sup>nd</sup> day  
Tagungen des Exekutivkomitees, Tag 2

*Arrivée des délégués*  
Arrival of the delegates  
Ankunft der Delegierten

20.00 *Dîner gala Newick Park Country Estate \**  
Gala Dinner Newick Park Country Estate \*  
Galadinner Newick Park Country Estate \*

### ***Le vendredi 9 septembre 2005***

**Friday, September 9, 2005**

**Freitag, den 9. September 2005**

09.00-16.00 *Assemblée générale de la FIMM*  
FIMM General Assembly  
Generalversammlung der FIMM

20.00 *Dîner de la FIMM \*, présentation avant le dîner*  
FIMM Dinner \*, pre-dinner presentation  
FIMM Galadinner \*, Präsentation vor dem Essen

### ***Le samedi 10 septembre 2005***

**Saturday, September 10, 2005**

**Samstag, den 10. September 2005**

09.00-12.00 *Réunion du Comité exécutif de l'Académie internationale de la FIMM, Balcombe*  
FIMM International Academy Executive Board meeting, Balcombe  
Tagung des Exekutivkomitees der Internationalen FIMM Akademie, Balcombe

*Départ des délégués*  
Departure of delegates  
Abreise der Delegierten

\* *Par membre deux représentants sont invités. Les représentants supplémentaires et les partenaires personnels enregistrés sont bien venus sur de propre frais.*

\* Two delegates per FIMM member are invited. Registered additional representatives and personal partners are welcome at their own cost.

\* Pro Mitglied sind zwei Delegierte eingeladen. Registrierte zusätzliche Delegierte und persönliche Partner sind willkommen (eigener Kostenbeitrag).

*Assemblée générale de la FIMM 2005*

**The General Assembly of FIMM 2005**

**Die Generalversammlung der FIMM 2005**

*Copthorne, London Gatwick (Royaume-Uni)*  
**Copthorne, London Gatwick (United Kingdom)**  
**Copthorne, London Gatwick (Großbritannien)**

**Agenda**

1. Opening by the President
2. Presentation of the British Institute of Musculoskeletal Medicine BIMM
3. Presentation of the representatives of the national societies (limited to 4 minutes per presentation)
4. Matters arising from the minutes of the last General Assembly (Bratislava – Slovak Republic)
5. Report from the President
6. Report from the Secretary General
7. Report from the FIMM International Academy of Manual/Musculoskeletal Medicine
8. Report from the FIMM Foundation
9. Matters concerning the future FIMM structure and strategy
10. Report from the Chairman of the Policy Committee: FIMM Policy 2010.
11. Report from the Chairman of the Education Committee
12. Report from the Treasurer
13. Report from the Auditors
14. Election of Auditors
15. Intermediate elections of members of the Executive Committee
16. Admission of new members (candidate is Kazakhstan)
17. Exclusion of members
18. Information on the next FIMM Congress 2007
19. Date and place for the General Assembly 2006
20. Any other Business
21. Closing of the General Assembly by the President

## ***Ordre du jour***

- 1. Ouverture par le Président*
- 2. Présentation par le British Institute of Musculoskeletal Medicine BIMM*
- 3. Présentation des délégations des Associations Nationales (limitée à 4 minutes par présentation)*
- 4. Remarques sur le procès-verbal de la dernière Assemblée générale (Bratislava – République Slovaque)*
- 5. Rapport du Président*
- 6. Rapport du Secrétaire Général*
- 7. Rapport de l'Académie internationale de Médecine Manuelle de la FIMM*
- 8. Rapport de la Fondation de la FIMM*
- 9. La stratégie et la structure à l'avenir de la FIMM*
- 10. Rapport du Président du Policy Committee: la FIMM, sa mission, 2010.*
- 11. Rapport de Président du Education Committee*
- 12. Rapport du Trésorier*
- 13. Rapports des Commissaires aux comptes*
- 14. Nomination des Commissaires aux comptes*
- 15. Élections de remplacement au Executive Committee*
- 16. Admission de nouveaux membres (candidat: Le Kazakhstan)*
- 17. Exclusion de membres*
- 18. Information concernant le Congrès de la FIMM en 2007*
- 19. Date et place de la prochaine assemblée générale en 2006*
- 20. Divers*
- 21. Conclusion de l'Assemblée générale par le Président*



## Tagesordnung

1. Eröffnung durch den Präsidenten
2. Präsentation durch das British Institute of Musculoskeletal Medicine BIMM
3. Vorstellung der Delegierten der nationalen Gesellschaften (maximal 4 Min. pro Präsentation)
4. Punkte aus dem Protokoll der letzten Generalversammlung (Bratislava – Slowakische Republik)
5. Bericht des Präsidenten
6. Bericht des Generalsekretärs
7. Bericht der Internationalen FIMM Akademie für Manuelle Medizin
8. Bericht der FIMM Stiftung
9. Die zukünftige Strategie und Struktur der FIMM
10. Bericht des Vorsitzenden des Policy Committee: Das FIMM Leitbild 2010.
11. Bericht des Vorsitzenden des Education Committee
12. Bericht des Schatzmeisters
13. Bericht der Kassenprüfer
14. Wahl der Kassenprüfer
15. Ersatzwahlen in das Executive Committee
16. Aufnahme neuer Mitglieder (Kandidat ist Kasachstan)
17. Ausschluss von Mitgliedern
18. Informationen zum FIMM Kongress 2007
19. Datum und Ort der Generalversammlung 2006
20. Varia
21. Schluss der Generalversammlung durch den Präsidenten

## Assemblée générale 2005 – General Assembly 2005 – Generalversammlung 2005 Enregistrement – Registration – Anmeldung

**À retourner s.v.p.:**  
**Please return to:**  
**Bitte senden an:**

**Fax No. : 0041 56 221 71 91**  
**E-Mail: b.terrier@bluewin.ch**

Prière aux délégués de la FIMM de s'enregistrer par <http://www.fimm-online.org> ou par fax ou Email.  
FIMM delegates please register by going to <http://www.fimm-online.org> or by fax or E-mail.  
FIMM Delegierte registrieren sich bitte über <http://www.fimm-online.org> oder per Fax oder Email.

Faites votre réservation de LOGEMENT directement par <http://www.proposaltd.com> et ensuite bedrooms for events s.v.p.  
Bitte reservieren Sie Ihre HOTEL ZIMMER direkt über <http://www.proposaltd.com> und dann bedrooms for events.  
Please make your HOTEL ROOM reservations by going to <http://www.proposaltd.com> and then bedrooms for events.

Salutation – Salutation – Anrede:

Titre – Titel – Titel

Prénom – Firstname – Vorname

Nom – Name – Name

Société – Society – Gesellschaft

Adresse – Address – Adresse

Code postale – Zip Code – Postleitzahl

Ville – City – Stadt

Pays – Country – Land

Téléfon – Telephone – Telefon

Fax – Fax – Fax

Portable – Mobile – Mobil

E-mail – E-Mail – E-Mail

FIMM: Fontionaire – Staff – Funktionär

BIMM Gala Dinner: September 08 / 09 / 2005\*

FIMM Dinner: September 09 / 09 / 2005\*

Remarque – Remark – Anmerkung

☐ non - no - nein ☐ oui - yes - ja

☐ no ☐ 1 pers. ☐ 2 pers. ☐ 3 pers.

☐ no ☐ 1 pers. ☐ 2 pers. ☐ 3 pers.

\* Par membre deux représentants sont invités. Les représentants supplémentaires et les partenaires personnels enregistrés sont bien venus sur de propre frais.

\* Two delegates per FIMM member are invited. Registered additional representatives and personal partners are welcome at their own cost.

\* Pro Mitglied sind zwei Delegierte eingeladen. Registrierte zusätzliche Delegierte und persönliche Partner sind willkommen (eigener Kostenbeitrag).