



Membership Delegate Reports Advanced Submissions

2021 FIMM General Assembly



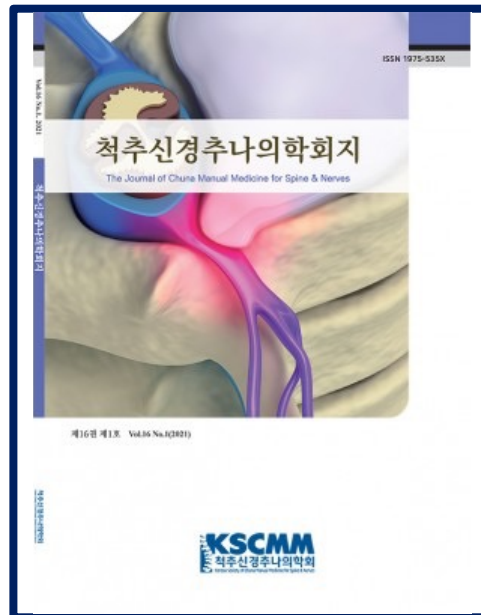
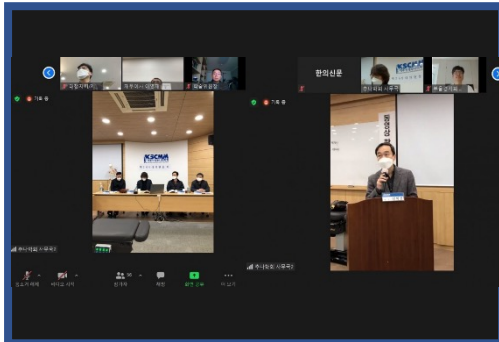
Fédération Internationale de Médecine Manuelle

International Federation of Manual / Musculoskeletal Medicine



Republic of Korea

Korean Society of Chuna Manual Medicine for Spine & Nerves KSCMM





2021 FIMM Delegate Report

Republic of Korea / KSCMM

- **Number of Societal Members:**
 - Estimated #members (FIMM 300-hr qualification): 4,380 (0)
- **Website:** <http://www.chuna.or.kr>
- **Leadership:**
 - President – *Hoe-Cheon YANG/hangje@hanmail.net*
 - Exec. Director/Secretary – *Daehee LEE/ldh0118@naver.com*
 - Treasurer – *Young-Jae LEE/lyj8793@hanmail.net*
 - FIMM Delegate – *Me-riong KIM/therev@jaseng.co.kr*
 - Education Liaison – *Sung-Hoon KI/elecen@empal.com*
 - International Affairs – *Hyun-Jun LEE/hjakamj@gmail.com*
- **Annual Meeting (Date/Site):** Apr, Jun, Oct, Jan / Online (Zoom)



2021 FIMM Delegate Report

Republic of Korea / KSCMM

- **MM Status in Country** (Respond yes/no for all that apply)
 - Society Certificate (**Yes**)
 - National certificate (**No**)
 - MM recognized as added qualification (**No**)
 - Recognized as specialty or subspecialty (**No**)
 - MM available in some/all medical schools (**Yes**)
 - MM integrated in some/all residency training (**Yes**)
 - MM central in a specialty residency training (**Yes**)
- **Society Education** (Respond yes/no for all that typically apply)
 - Manual Medicine hands-on workshops (**Yes**)
 - Injection / Dry Needling hands-on workshops (**No**)
 - Research distribution/programs (**Yes**)
 - Journal: *The Journal of Chuna Manual Medicine for Spine & Nerves (JCMM)*



2021 Societal SWOT Analysis

Republic of Korea / KSCMM

➤ Strengths

- Large society with 4,000+ members and 30 year history
- Systematic nationwide education provided through 8 regional societies

➤ Weaknesses

- Education dependent on dedication of individual instructors (time, energy consuming)
- KSCMM curriculum/training not directly related to specialty training or undergraduate coursework

➤ Opportunities

- Chuna included in Korean National Health Insurance as of April 2019 (leading to increase of new members)
- Journal of KSCMM officially recognized as KCI journal

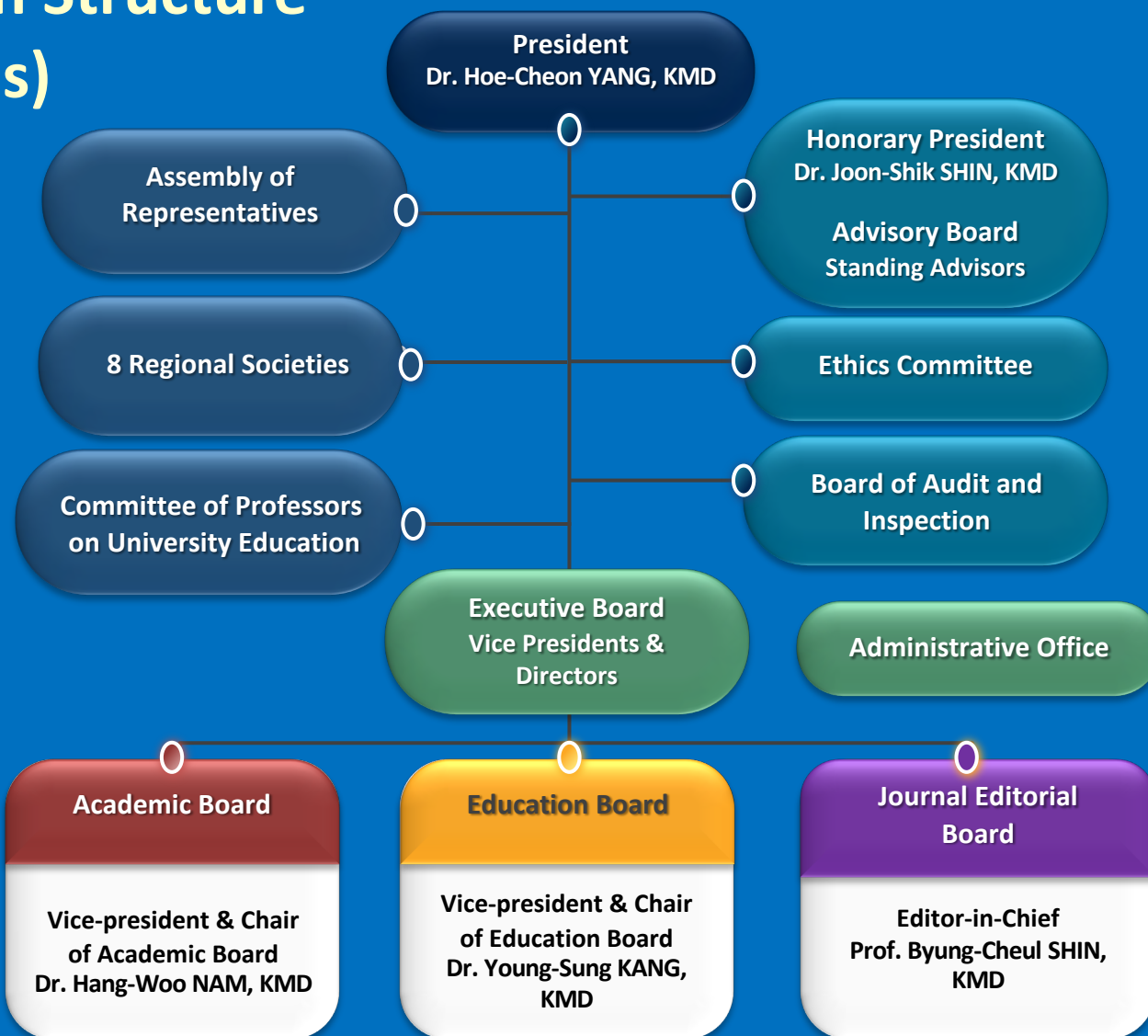
➤ Threats

- Workshop/Hands-on training difficulties due to COVID-19
- Extensive private insurance coverage for physical/manual therapy



Republic of Korea / KSCMM

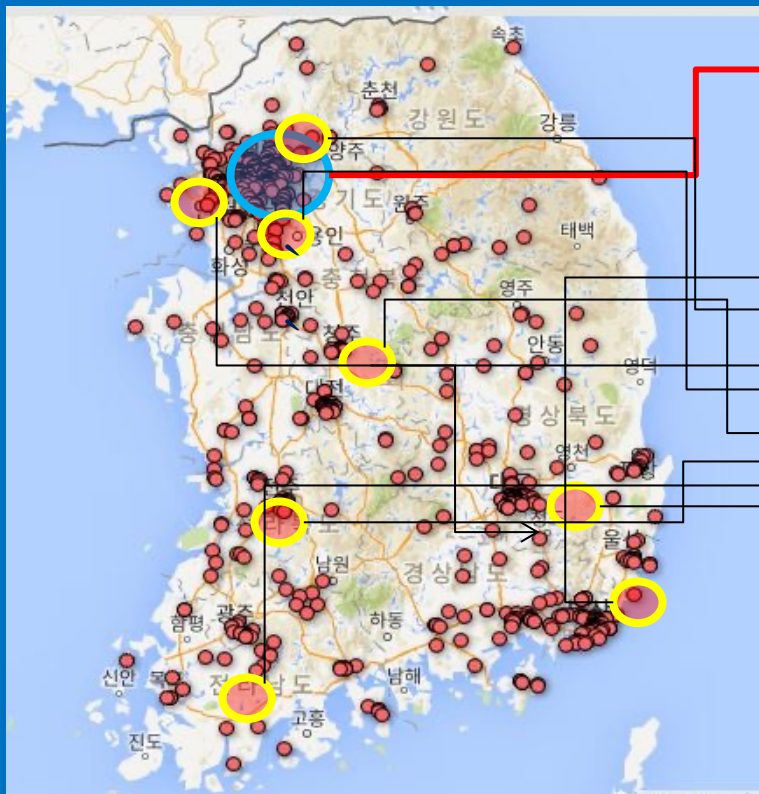
Organization Structure (Committees)





Republic of Korea / KSCMM

Organization Structure (Regional)



Main headquarters
(in Seoul)

8 Regional Societies

- Seoul
- Gyeonggi/Incheon
- Jaseng (Seoul)
- Daejeon/Chungcheong
- Busan/Gyeong-nam
- Daegu/Gyeong-buk
- Gwangju/Jeon-nam
- Jeonju/Jeon-buk



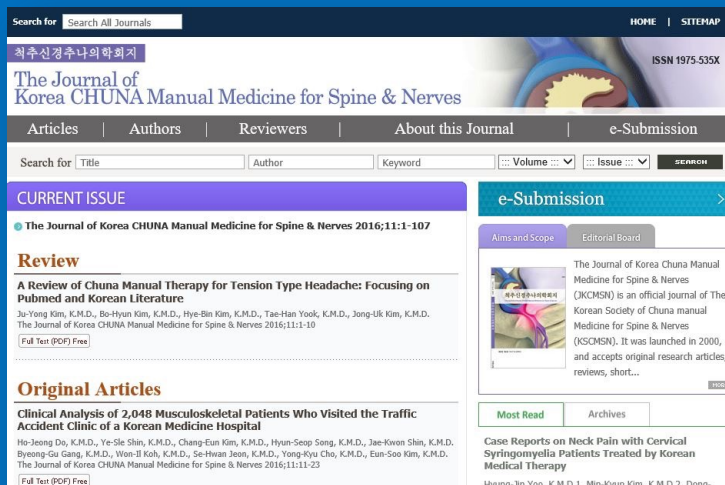
Republic of Korea / KSCMM

Website and Journal

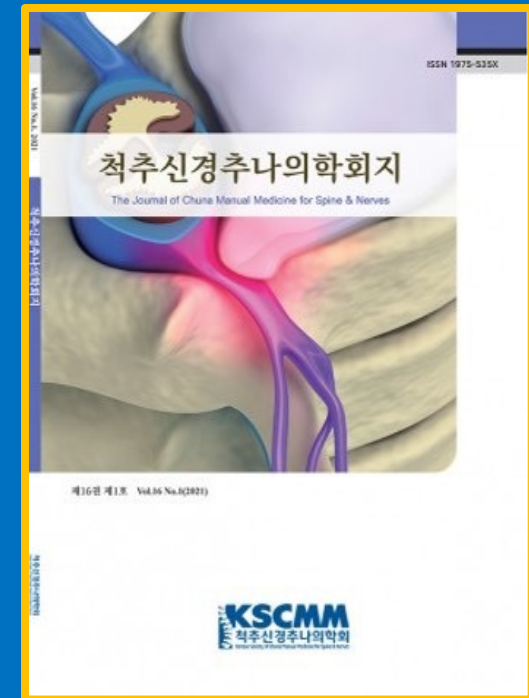
Website: www.chuna.or.kr (society)



www.chuna.kr (journal)



Journal of KSCMM



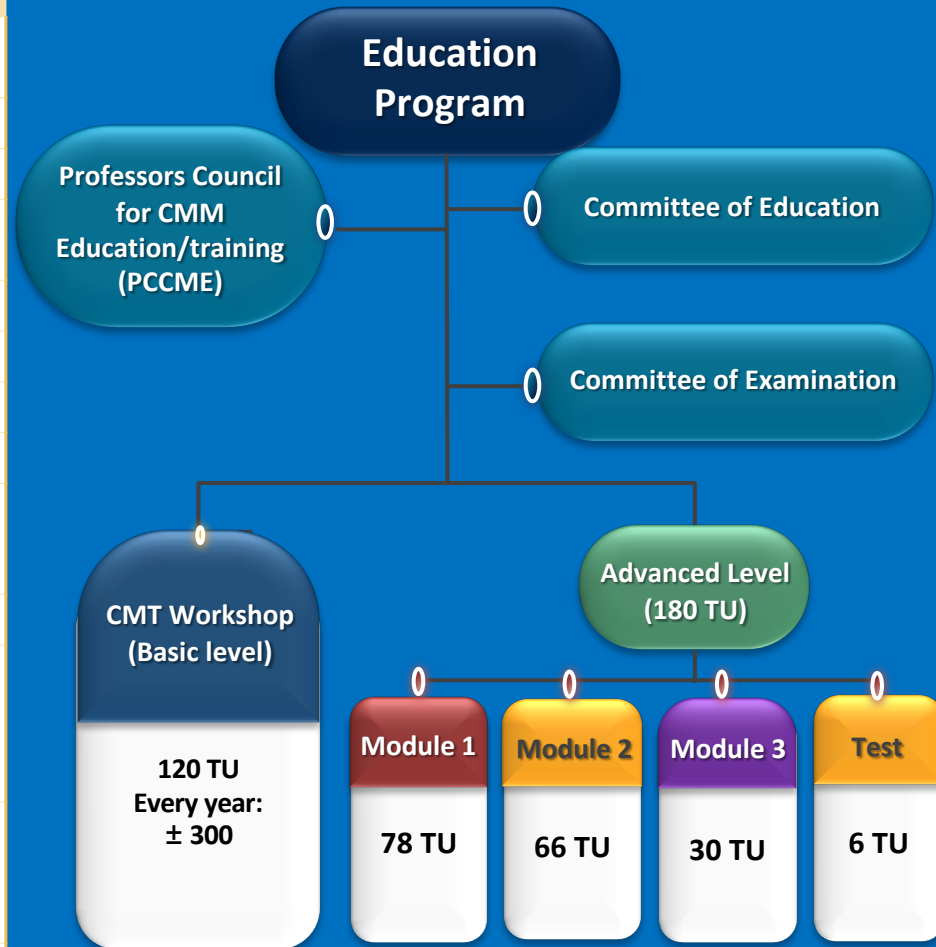
- Published biannually:
June, Dec
- Since 2000



Republic of Korea / KSCMM

Education/Training Program – 1

KSCMM Academy > CMT workshop > Basic level		
Subject	Course	Teaching Unit
#1st. term	1. Principles & Procedures	12TU
	2. Soft Tissue	12TU
#2nd. term	3. Cervical Spine, Occipital & Temporomandibular Joint	12TU
	4. Lumbar, Thoracic Spine & Rib Cage	12TU
#3rd. term	5. Pelvic Girdle	12TU
	6. Extremities	12TU
Mentorship	Mentor teaching (10 ponits)	16TU
Self directing learning	Self directed learning (Required case report submit)	20TU
Additional requirements	Regular CME Seminars (elective one times)	6TU
	Regional practical test (30 points)	6TU
	Central completion examination (written examination score: 20 points / Practical test: 40 points)	
	1. Total score should be equal to or above 60 points out of total 100 points. 2. Attendance record should be equal to or above 80% out of 100%.	Pass/Fail
Total		120TU





Republic of Korea / KSCMM

Education/Training Program – 2

KSCMM Academy > Advanced course > Module 1 (M1)

Subject	Course	Teaching Unit
Principles	Principles & Procedures, Gait analysis	10TU
HVLA Techniques	1. Cervical, Occipital & Temporomandibular Joint Thrust techniques – 4TU 2. Thoracic and Rib cage Thrust techniques – 6TU 3. Lumbar Thrust techniques – 4TU 4. Pelvic and Hip Thrust techniques – 4TU	18TU
Soft Tissues	1. Neurofascial release & Mobilization – 6TU 2. Clinical applications of anatomy trains – 4TU 3. Application of Integrated soft tissue technique – 6TU 4. Ligamentous articular strain (LAS) technique – 4 TU	20TU
Extremities	Foot technique	6TU
Specialized techniques	Mulligan technique – 10TU Therapeutic exercise – 6TU	16TU
Self directing learning	Clinical application - Required case report submit	10TU
Additional requirements	Attendance record should be equal to or above 80% out of 100%.	Pass/Fail
Total		80TU

KSCMM Academy > Advanced course > Module 2 (M2)

Subject	Course	Teaching Unit
Imaging studies	X-ray, Postural pattern studies – 2TU	6TU
	MRI, CT scan – 2TU	
	Ultrasonic diagnosis – 2TU	
Differential diagnosis	Musculoskeletal diseases and differential diagnosis – 2TU	4TU
	Essential in clinical neurological examination – 2TU	
Cranio-sacral system	Palpation and Listening – 4TU	12TU
	Cranial manipulation – 4TU	
	Sacro-occipital technique – 4TU	
Visceral system	Internal organs anatomy – 2TU	10TU
	Palpation and Listening – 2TU	
	Visceral manipulation – 6TU	
Lymphatic system	Lymphatic technique – 6TU	6TU
Meridian system	Manipulation & Acupuncture multimodality treatment – 4TU	4TU
Clinical application	Pediatric manipulation – 3TU	22TU
	OBGY(Obstetrics & Gynecology) manipulation – 3TU	
	Sports Injury: emergency treatment, dislocation & splint, taping etc. – 3TU	
	Nutrition for musculoskeletal disease – 3TU	
	Psychological counseling for pain patients – 4TU	
Self directing learning	Theory and application of Functional neurology – 6TU	10TU
	Clinical application - Required case report submit	
	Attendance record should be equal to or above 80% out of 100%.	
Additional requirements	Attendance record should be equal to or above 80% out of 100%.	Pass/Fail
Total		74TU



Republic of Korea / KSCMM

Education/Training Program – 3

KSCMM Academy > Advanced course > Module 3 (M3)

Subject	Course	Teaching Unit
Elective Course	Movement assessment – Diagnosis and Treatment	30TU
	Whole body mechanics – Diagnosis and Treatment	
	Alignment and malalignment – Diagnosis and Treatment	
Additional requirements	Attendance record should be equal to or above 80% out of 100%.	Pass/Fail
Total		30TU

KSCMM Academy > Advanced course > Test of completion

Subject	Course	Teaching Unit
Test of completion	Total score should be equal to or above 60 points out of total 100 points. (including written examination & practical test)	6TU

Current Education/Training Program

- **Basic workshop: 120 TU**
 - Since 1994
 - \pm 300 trainees/year
- **Advanced Level: 184 TU**
 - Since 2016
 - \pm 50~100 trainees/year
 - Module 1, 2, 3 for 2~3 years
- **CIQ (CMM Standard Curriculum Instruction Qualification) system**
 - \pm 120 CIQ instructors
 - Qualified instructor management system